

Veterans Day 5k

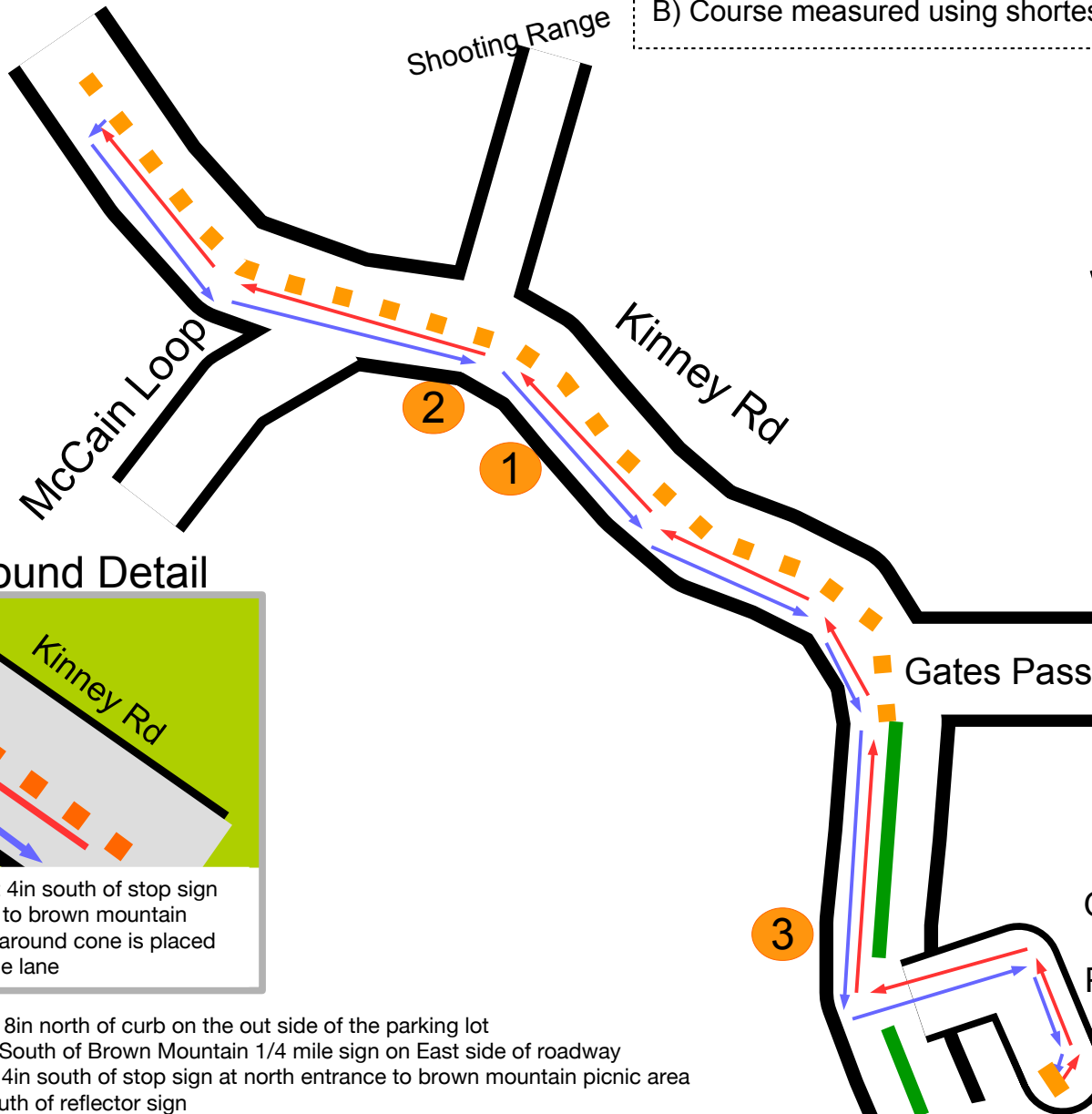
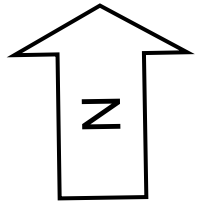
TUCSON, AZ

Measurer: Lucas Tyler/Tim Gendler

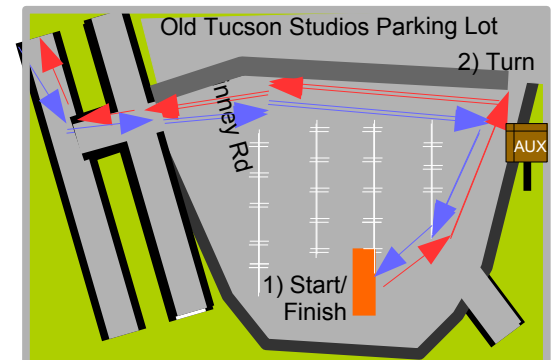
Notes:

A) On Kinney Rd runners will be restricted by cones to in-between median and the curb on south side of the road.

B) Course measured using shortest possible route

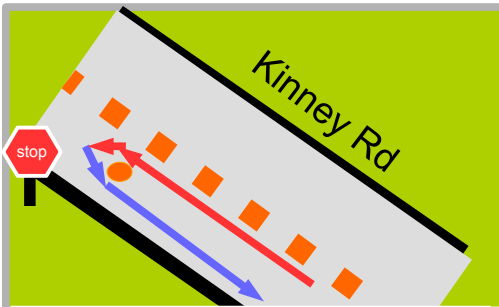


Start/Finish Detail



1) Start/Finish: 44ft 8in north of curb on the south side of the parking lot & 217 ft 8in southwest of auxiliary parking sign.
 2) Turn: The turn in the Old Tucson Parking Lot is 22ft 9in west of the edge of the parking lot and 48ft 4in northwest of the auxiliary parking sign.

Turn Around Detail



Turn Around: 28ft 4in south of stop sign at north entrance to brown mountain picnic area. Turn around cone is placed in the center of the lane

Start/Finish: 44ft 8in north of curb on the out side of the parking lot
 Mile 1: 101ft 10in South of Brown Mountain 1/4 mile sign on East side of roadway
 Turn Around: 28ft 4in south of stop sign at north entrance to brown mountain picnic area
 Mile 2: 37ft 1in south of reflector sign
 Mile 3: 65ft 8in South East to "No overnight parking or camping permitted sign"
 All mile markers, turn around and start/finish are marked with white spray paint

Old Tucson Studios Parking Lot

Start/Finish